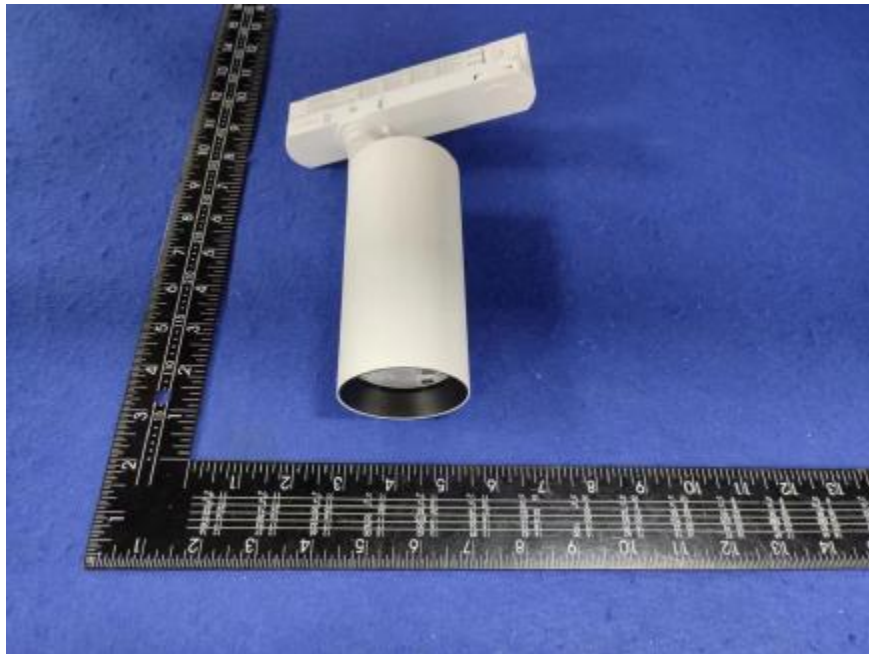


### Luminaire Photograph

---



Light Output Ratio:	92.6%	
Luminaire Power:	28.14 W	
SHR Nominal:	0.00	Calculated using the TM5
SHR Maximum:	0.30	fine grid method.

C Range: 0 - 360DEG  
C Interval: 30.0DEG  
Test Speed: HIGH  
Temperature: 25.3 °C  
Operators: zoe  
Test Date: 2023-10-5

Range: 0 - 180DEG  
Interval: 1.0DEG  
Test System: EVERFINE GO-SPEX500\_V1 SYSTEM V2.00.461  
Humidity: 65.0%  
Test Distance: 3.160m [K=1.0000]  
Remarks: LAMP: BXRE-30G1000-A-83 Ra: 90  
LENS: PM-0132-007-056 15R  
DRIVER: ECXe 1050.646 700mA  
30minutes warm-up

## LUMINOUS INTENSITY DISTRIBUTION DIAGRAM

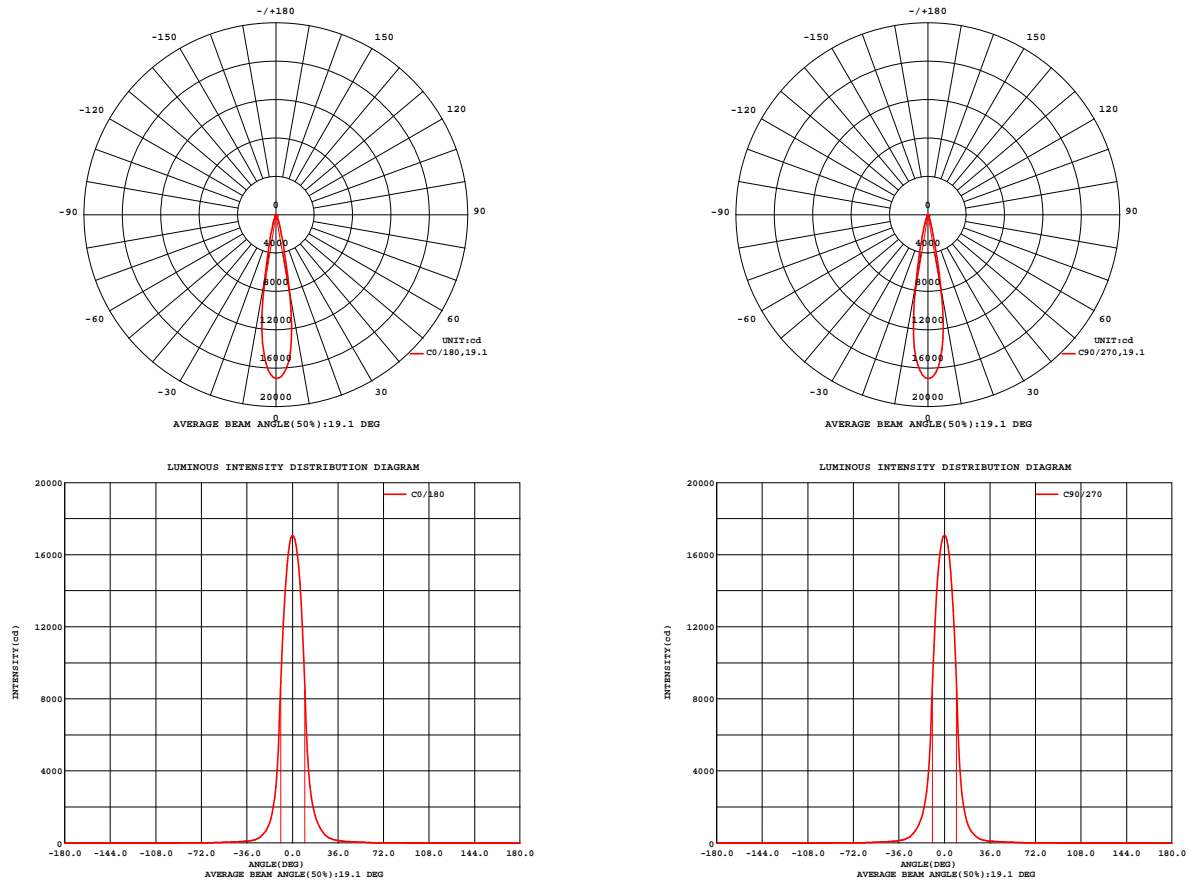


Fig. C0/C180

Fig. C90/C270

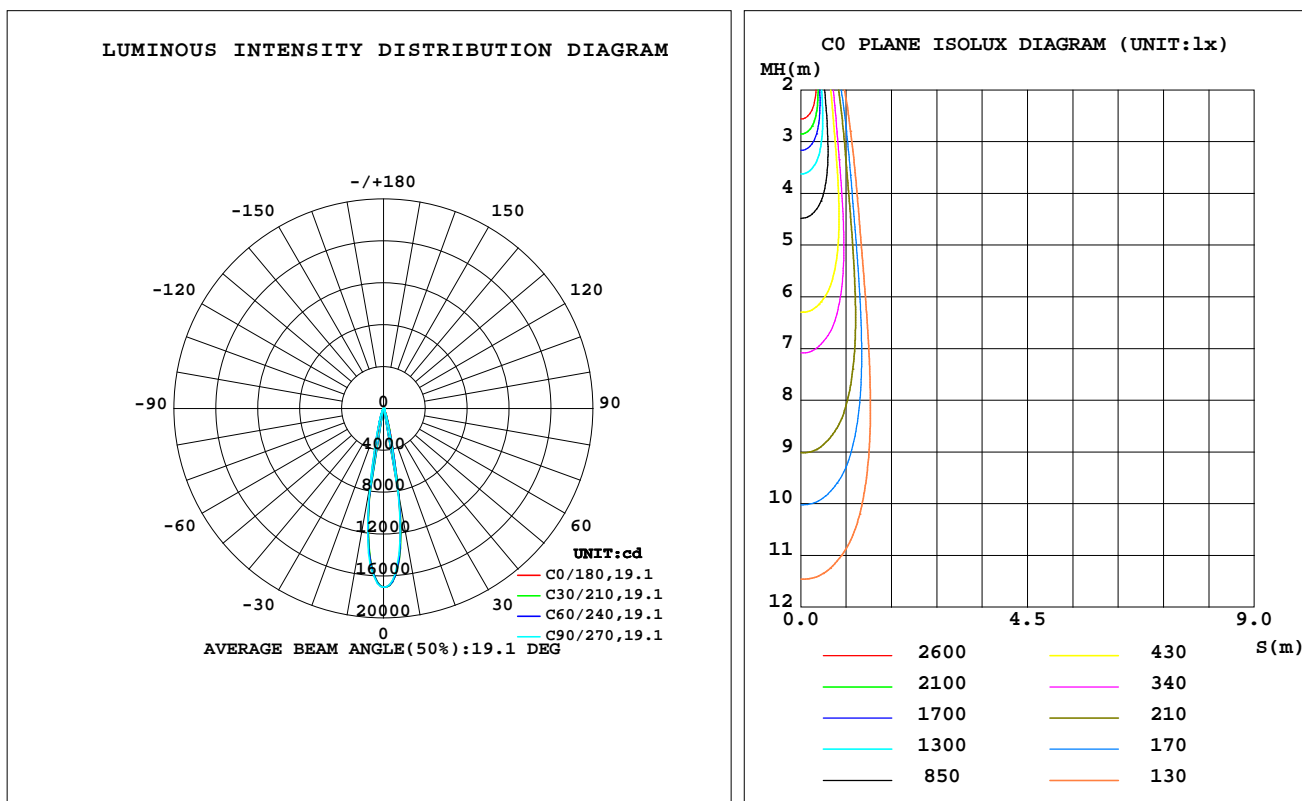
C Range: 0 - 360DEG  
C Interval: 30.0DEG  
Test Speed: HIGH  
Temperature: 25.3 °C  
Operators: zoe  
Test Date: 2023-10-5

Range: 0 - 180DEG  
Interval: 1.0DEG  
Test System: EVERFINE GO-SPEX500\_V1 SYSTEM V2.00.461  
Humidity: 65.0%  
Test Distance: 3.160m [K=1.0000]  
Remarks: LAMP: BXRE-30G1000-A-83 Ra: 90  
LENS: PM-0132-007-056 15R  
DRIVER: ECXe 1050.646 700mA  
30minutes warm-up

## LUMINAIRE PHOTOMETRIC TEST REPORT

Test:U:220.03V I:0.1327A P:28.145W PF:0.9609 Freq:49.99Hz Lamp Flux:2523.8x1 lm		
NAME: 2319.200-UA-700	TYPE:	WEIGHT:
SPEC.: 3000K	DIM.:	SERIAL No.: 2310051122
MFR.: RISE	SUR.: 0.002826m2	Shielding Angle:

DATA OF LAMP		PHOTOMETRIC DATA Eff: 83.02 lm/W			
MODEL	Bridgelux	Imax(cd)	17069	S/MH(C0/180)	0.29
NOMINAL POWER(W)	28	LOR(%)	92.6	S/MH(C90/270)	0.30
RATED VOLTAGE(V)	220	TOTAL FLUX(lm)	2336.5	UP,DN(C0-180)	0.0,46.0
NOMINAL FLUX(lm)	2523.8	CIE CLASS	DIRECT	UP,DN(C180-360)	0.0,46.6
LAMPS INSIDE	1	up(%)	0.0	CIBSE SHR NOM	0.00
TEST VOLTAGE(V)	220	down(%)	92.6	CIBSE SHR MAX	0.30



C Range: 0 - 360DEG  
C Interval: 30.0DEG  
Test Speed: HIGH  
Temperature:25.3℃  
Operators:zoe  
Test Date:2023-10-5

Range: 0 - 180DEG  
Interval: 1.0DEG  
Test System:EVERFINE GO-SPEX500\_V1 SYSTEM V2.00.461  
Humidity:65.0%  
Test Distance:3.160m [K=1.0000]  
Remarks: LAMP:BXRE-30G1000-A-83 Ra:90  
LENS:PM-0132-007-056 15R  
DRIVER: ECXe 1050.646 700mA  
30minutes warm-up

## ZONAL FLUX DIAGRAM

### ZONAL FLUX DIAGRAM:

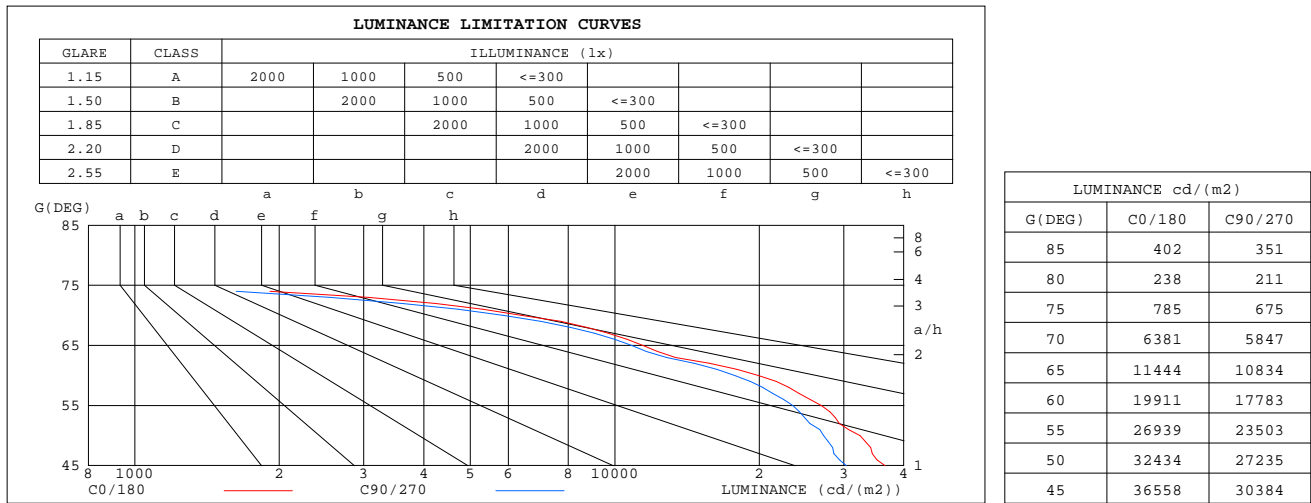
	C0	C45	C90	C135	C180	C225	C270	C315		zone	total	%lum,lamp
10	832.9	849.2	797.8	689.1	708.3	693.6	745.2	847.3	0- 10	1195	1195	51.2,47.4
20	112.0	97.79	81.44	70.15	78.84	88.61	103.9	116.0	10- 20	743.7	1939	83,76.8
30	24.90	20.98	17.53	15.98	17.30	19.55	23.80	26.42	20- 30	209.0	2148	91.9,85.1
40	10.09	9.070	8.231	7.802	8.037	8.532	9.684	10.64	30- 40	84.43	2233	95.6,88.5
50	5.890	5.371	4.946	4.829	4.958	5.247	5.607	6.078	40- 50	52.60	2285	97.8,90.5
60	2.813	2.696	2.512	2.400	2.512	2.553	2.659	2.926	50- 60	35.69	2321	99.3,92
70	0.6166	0.6246	0.5650	0.5265	0.5605	0.5637	0.5538	0.6290	60- 70	13.99	2335	99.9,92.5
80	0.0117	0.0083	0.0104	0.0083	0.0098	0.0068	0.0086	0.0065	70- 80	1.601	2336	100,92.6
90	0	0	0	0	0	0	0	0	80- 90	0.0667	2336	100,92.6
100	0	0	0	0	0	0	0	0	90-100	0	2336	100,92.6
110	0	0	0	0	0	0	0	0	100-110	0	2336	100,92.6
120	0	0	0	0	0	0	0	0	110-120	0	2336	100,92.6
130	0	0	0	0	0	0	0	0	120-130	0	2336	100,92.6
140	0	0	0	0	0	0	0	0	130-140	0	2336	100,92.6
150	0	0	0	0	0	0	0	0	140-150	0	2336	100,92.6
160	0	0	0	0	0	0	0	0	150-160	0	2336	100,92.6
170	0	0	0	0	0	0	0	0	160-170	0	2336	100,92.6
180	0	0	0	0	0	0	0	0	170-180	0	2336	100,92.6
DEG	LUMINOUS INTENSITY:X10cd									UNIT:lm		

C Range: 0 - 360DEG  
C Interval: 30.0DEG  
Test Speed: HIGH  
Temperature:25.3℃  
Operators:zoe  
Test Date:2023-10-5

Range: 0 - 180DEG  
Interval: 1.0DEG  
Test System:EVERFINE GO-SPEX500\_V1 SYSTEM V2.00.461  
Humidity:65.0%  
Test Distance:3.160m [K=1.0000]  
Remarks: LAMP:BXRE-30G1000-A-83 Ra:90  
LENS:PM-0132-007-056 15R  
DRIVER: ECXe 1050.646 700mA  
30minutes warm-up

## LUMINANCE LIMITATION CURVES

Test:U:220.03V I:0.1327A P:28.145W PF:0.9609 Freq:49.99Hz Lamp Flux:2523.8x1 lm		
NAME: 2319.200-UA-700	TYPE:	WEIGHT:
SPEC.: 3000K	DIM.:	SERIAL No.: 2310051122
MFR.: RISE	SUR.: 0.002826m2	Shielding Angle:



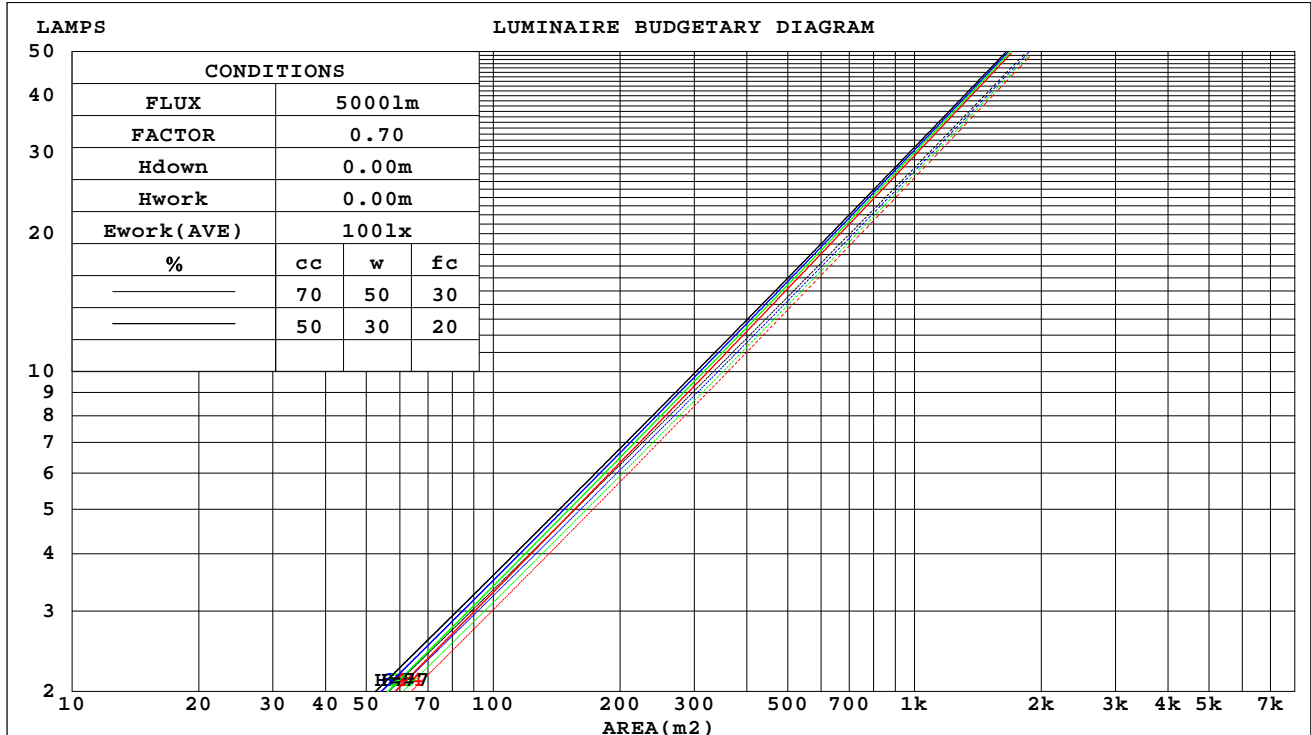
C Range: 0 - 360DEG  
C Interval: 30.0DEG  
Test Speed: HIGH  
Temperature:25.3℃  
Operators:zoe  
Test Date:2023-10-5

Range: 0 - 180DEG  
Interval: 1.0DEG  
Test System:EVERFINE GO-SPEX500\_V1 SYSTEM V2.00.461  
Humidity:65.0%  
Test Distance:3.160m [K=1.0000]  
Remarks: LAMP:BXRE-30G1000-A-83 Ra:90  
LENS:PM-0132-007-056 15R  
DRIVER: ECXe 1050.646 700mA  
30minutes warm-up

## CU AND LUMINAIRE BUDGETARY ESTIMATE DIAGRAM

Test:U:220.03V I:0.1327A P:28.145W PF:0.9609 Freq:49.99Hz Lamp Flux:2523.8x1 lm		
NAME: 2319.200-UA-700	TYPE:	WEIGHT:
SPEC.: 3000K	DIM.:	SERIAL No.: 2310051122
MFR.: RISE	SUR.: 0.002826m2	Shielding Angle:

cc	80%			70%			50%			30%			10%			0
w	50%	30%	10%	50%	30%	10%	50%	30%	10%	50%	30%	10%	50%	30%	10%	0
fc	20%			20%			20%			20%			20%			0
RCR	RCR:Room Cavity Ratio															



C Range: 0 - 360DEG  
C Interval: 30.0DEG  
Test Speed: HIGH  
Temperature:25.3℃  
Operators:zoe  
Test Date:2023-10-5

Range: 0 - 180DEG  
Interval: 1.0DEG  
Test System:EVERFINE GO-SPEX500\_V1 SYSTEM V2.00.461  
Humidity:65.0%  
Test Distance:3.160m [K=1.0000]  
Remarks: LAMP:BXRE-30G1000-A-83 Ra:90  
LENS:PM-0132-007-056 15R  
DRIVER: ECXe 1050.646 700mA  
30minutes warm-up

### WEC AND CCEC

Test:U:220.03V I:0.1327A P:28.145W PF:0.9609 Freq:49.99Hz Lamp Flux:2523.8x1 lm		
NAME: 2319.200-UA-700	TYPE:	WEIGHT:
SPEC.: 3000K	DIM.:	SERIAL No.: 2310051122
MFR.: RISE	SUR.: 0.002826m2	Shielding Angle:

cc	80%			70%			50%			30%			10%			0	
w	50%	30%	10%	50%	30%	10%	50%	30%	10%	50%	30%	10%	50%	30%	10%	0	
fc	20%			20%			20%			20%			20%			0	
RCR	RCR:Room Cavity Ratio						Wall Exitance Coefficients(WEC)										
0.0																	
1.0	.122	.069	.022	.115	.066	.021	.104	.060	.019	.093	.054	.017	.084	.049	.016		
2.0	.112	.062	.019	.107	.059	.018	.098	.055	.017	.089	.050	.016	.081	.046	.015		
3.0	.104	.056	.017	.100	.054	.016	.092	.050	.015	.085	.047	.014	.078	.043	.013		
4.0	.097	.050	.015	.094	.049	.014	.087	.046	.014	.081	.043	.013	.075	.041	.012		
5.0	.091	.046	.013	.088	.045	.013	.082	.043	.013	.077	.041	.012	.072	.039	.012		
6.0	.085	.043	.012	.083	.042	.012	.078	.040	.012	.074	.038	.011	.069	.037	.011		
7.0	.080	.040	.011	.078	.039	.011	.074	.037	.011	.070	.036	.010	.067	.035	.010		
8.0	.076	.037	.010	.074	.037	.010	.071	.035	.010	.067	.034	.010	.064	.033	.010		
9.0	.072	.035	.010	.071	.034	.010	.067	.033	.009	.064	.032	.009	.062	.031	.009		
10.0	.069	.033	.009	.067	.032	.009	.064	.032	.009	.062	.031	.009	.059	.030	.009		

cc	80%			70%			50%			30%			10%			0
w	50%	30%	10%	50%	30%	10%	50%	30%	10%	50%	30%	10%	50%	30%	10%	0
fc	20%			20%			20%			20%			20%			0
RCR	RCR:Room Cavity Ratio			Ceiling Cavity Exitance Coefficients(CCEC)												
0.0	.176	.176	.176	.151	.151	.151	.103	.103	.103	.059	.059	.059	.019	.019	.019	
1.0	.155	.146	.137	.133	.125	.118	.091	.086	.082	.052	.050	.048	.017	.016	.015	
2.0	.138	.123	.110	.119	.106	.095	.081	.073	.066	.047	.043	.039	.015	.014	.013	
3.0	.124	.105	.089	.106	.090	.077	.073	.063	.054	.042	.037	.032	.014	.012	.010	
4.0	.112	.091	.074	.096	.078	.064	.066	.055	.045	.038	.032	.027	.012	.010	.009	
5.0	.102	.079	.062	.088	.068	.054	.060	.048	.038	.035	.028	.023	.011	.009	.007	
6.0	.094	.070	.052	.080	.060	.046	.055	.042	.032	.032	.025	.019	.010	.008	.006	
7.0	.086	.062	.045	.074	.054	.039	.051	.038	.028	.030	.022	.016	.010	.007	.005	
8.0	.080	.056	.039	.069	.048	.034	.048	.034	.024	.028	.020	.014	.009	.007	.005	
9.0	.074	.050	.034	.064	.044	.030	.044	.031	.021	.026	.018	.012	.008	.006	.004	
10.0	.070	.046	.030	.060	.040	.026	.042	.028	.018	.024	.016	.011	.008	.005	.004	

C Range: 0 - 360DEG  
C Interval: 30.0DEG  
Test Speed: HIGH  
Temperature:25.3℃  
Operators:zoe  
Test Date:2023-10-5

Range: 0 - 180DEG  
Interval: 1.0DEG  
Test System:EVERFINE GO-SPEX500\_V1 SYSTEM V2.00.461  
Humidity:65.0%  
Test Distance:3.160m [K=1.0000]  
Remarks: LAMP:BXRE-30G1000-A-83 Ra:90  
LENS:PM-0132-007-056 15R  
DRIVER: ECXe 1050.646 700mA  
30minutes warm-up

## UGR(Unified Glare Rating) Table

Test:U:220.03V I:0.1327A P:28.145W PF:0.9609 Freq:49.99Hz Lamp Flux:2523.8x1 lm										
NAME: 2319.200-UA-700					TYPE:			WEIGHT:		
SPEC.: 3000K					DIM.:			SERIAL No.: 2310051122		
MFR.: RISE					SUR.: 0.002826m2			Shielding Angle:		
ceiling/cavity	0.7	0.7	0.5	0.5	0.3	0.7	0.7	0.5	0.5	0.3
walls	0.5	0.3	0.5	0.3	0.3	0.5	0.3	0.5	0.3	0.3
working plane	0.2	0.2	0.2	0.2	0.2	0.2	0.2	0.2	0.2	0.2
Room dimensions	Viewed crosswise					Viewed endwise				
x = 2H y = 2H	13.5	14.1	13.7	14.2	14.4	12.8	13.4	13.0	13.6	13.7
3H	13.6	14.2	13.8	14.3	14.5	12.9	13.5	13.2	13.7	13.9
4H	13.5	14.1	13.8	14.3	14.5	12.9	13.4	13.1	13.6	13.8
6H	13.5	14.0	13.7	14.2	14.4	12.8	13.3	13.1	13.5	13.8
8H	13.4	13.9	13.7	14.1	14.4	12.8	13.3	13.0	13.5	13.7
12H	13.4	13.8	13.7	14.1	14.4	12.7	13.2	13.0	13.4	13.7
4H 2H	13.6	14.1	13.9	14.3	14.6	13.0	13.5	13.3	13.7	14.0
3H	13.7	14.2	14.0	14.5	14.7	13.1	13.6	13.4	13.9	14.1
4H	13.6	14.1	14.0	14.4	14.7	13.1	13.5	13.4	13.8	14.1
6H	13.5	13.9	13.9	14.3	14.6	13.0	13.4	13.3	13.7	14.0
8H	13.5	13.8	13.9	14.2	14.6	12.9	13.3	13.3	13.6	14.0
12H	13.4	13.8	13.8	14.1	14.5	12.8	13.2	13.2	13.6	13.9
8H 4H	13.5	13.9	13.9	14.2	14.6	12.9	13.3	13.3	13.6	14.0
6H	13.4	13.7	13.8	14.1	14.5	12.8	13.1	13.2	13.5	13.9
8H	13.3	13.6	13.8	14.0	14.4	12.7	13.0	13.2	13.4	13.9
12H	13.3	13.5	13.7	13.9	14.4	12.7	12.9	13.1	13.4	13.8
12H 4H	13.4	13.8	13.8	14.1	14.5	12.9	13.2	13.3	13.6	14.0
6H	13.3	13.6	13.8	14.0	14.4	12.7	13.0	13.2	13.4	13.9
8H	13.3	13.5	13.7	13.9	14.4	12.7	12.9	13.1	13.4	13.8
Variations with the observer position at spacings(CIE Pub.117):										
S = 1.0H	+ 1.0 / - 1.3					+ 0.9 / - 1.4				
1.5H	+ 1.3 / - 1.2					+ 0.7 / - 0.7				
2.0H	+ 1.5 / - 3.4					+ 1.2 / - 2.9				

CIE Pub.117, 2524 lm Total Lamp Luminous Flux Correct (8log(F/F0) = 3.2)  
Area: 0.002826 m2

C Range: 0 - 360DEG  
C Interval: 30.0DEG  
Test Speed: HIGH  
Temperature:25.3℃  
Operators:zoe  
Test Date:2023-10-5

Range: 0 - 180DEG  
Interval: 1.0DEG  
Test System:EVERFINE GO-SPEX500\_V1 SYSTEM V2.00.461  
Humidity:65.0%  
Test Distance:3.160m [K=1.0000]  
Remarks: LAMP:BXRE-30G1000-A-83 Ra:90  
LENS:PM-0132-007-056 15R  
DRIVER: ECXe 1050.646 700mA  
30minutes warm-up



### UTILIZATION FACTORS TABLE

Test:U:220.03V I:0.1327A P:28.145W PF:0.9609 Freq:49.99Hz Lamp Flux:2523.8x1 lm		
NAME: 2319.200-UA-700	TYPE:	WEIGHT:
SPEC.: 3000K	DIM.:	SERIAL No.: 2310051122
MFR.: RISE	SUR.: 0.002826m2	Shielding Angle:

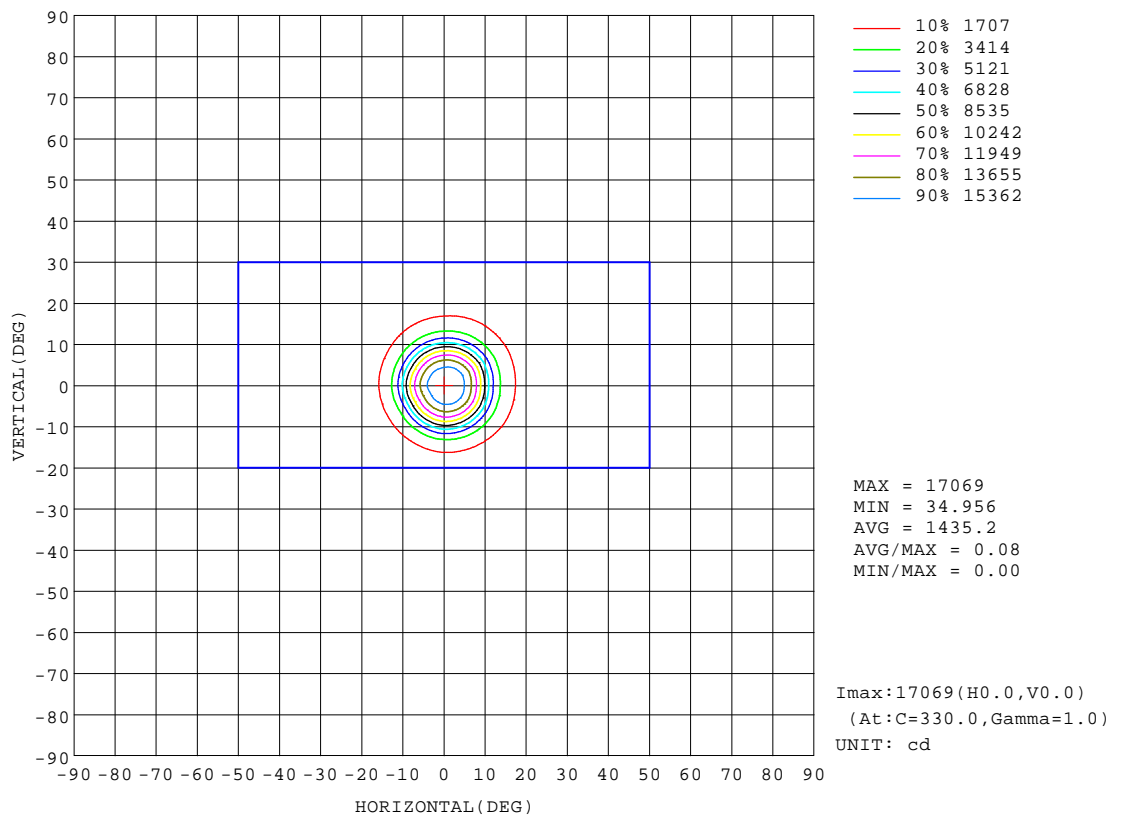
REFLECTANCE										
Ceiling	0.8	0.8	0.8	0.7	0.7	0.7	0.5	0.5	0.5	0
Walls	0.7	0.5	0.3	0.7	0.5	0.3	0.7	0.5	0.3	0
Working plane	0.2	0.2	0.2	0.2	0.2	0.2	0.2	0.2	0.2	0
ROOM INDEX	UTILIZATION FACTORS(PERCENT) $k(RI) \times RCR = 5$									
k = 0.60	82	76	73	82	76	73	81	76	73	70
0.80	89	84	80	88	83	80	87	83	80	77
1.00	93	88	85	92	87	84	91	87	84	80
1.25	96	92	89	95	91	88	94	90	87	84
1.50	99	94	92	98	94	91	96	92	90	86
2.00	101	97	94	100	96	94	97	94	92	88
2.50	102	99	96	101	98	96	98	96	94	88
3.00	104	101	98	102	99	97	99	97	95	90
4.00	106	103	101	104	102	100	100	99	97	91
5.00	107	105	103	105	103	102	101	100	99	92
ROOM INDEX	UF(total)									Direct
According to DIN EN 13032-2 2004			Suspended					SHRNOM = 1.25		

C Range: 0 - 360DEG  
C Interval: 30.0DEG  
Test Speed: HIGH  
Temperature:25.3℃  
Operators:zoe  
Test Date:2023-10-5

Range: 0 - 180DEG  
Interval: 1.0DEG  
Test System:EVERFINE GO-SPEX500\_V1 SYSTEM V2.00.461  
Humidity:65.0%  
Test Distance:3.160m [K=1.0000]  
Remarks: LAMP:BXRE-30G1000-A-83 Ra:90  
LENS:PM-0132-007-056 15R  
DRIVER: ECXe 1050.646 700mA  
30minutes warm-up

## ISOCANDELA DIAGRAM

Test:U:220.03V I:0.1327A P:28.145W PF:0.9609 Freq:49.99Hz Lamp Flux:2523.8x1 lm		
NAME: 2319.200-UA-700	TYPE:	WEIGHT:
SPEC.: 3000K	DIM.:	SERIAL No.: 2310051122
MFR.: RISE	SUR.: 0.002826m2	Shielding Angle:

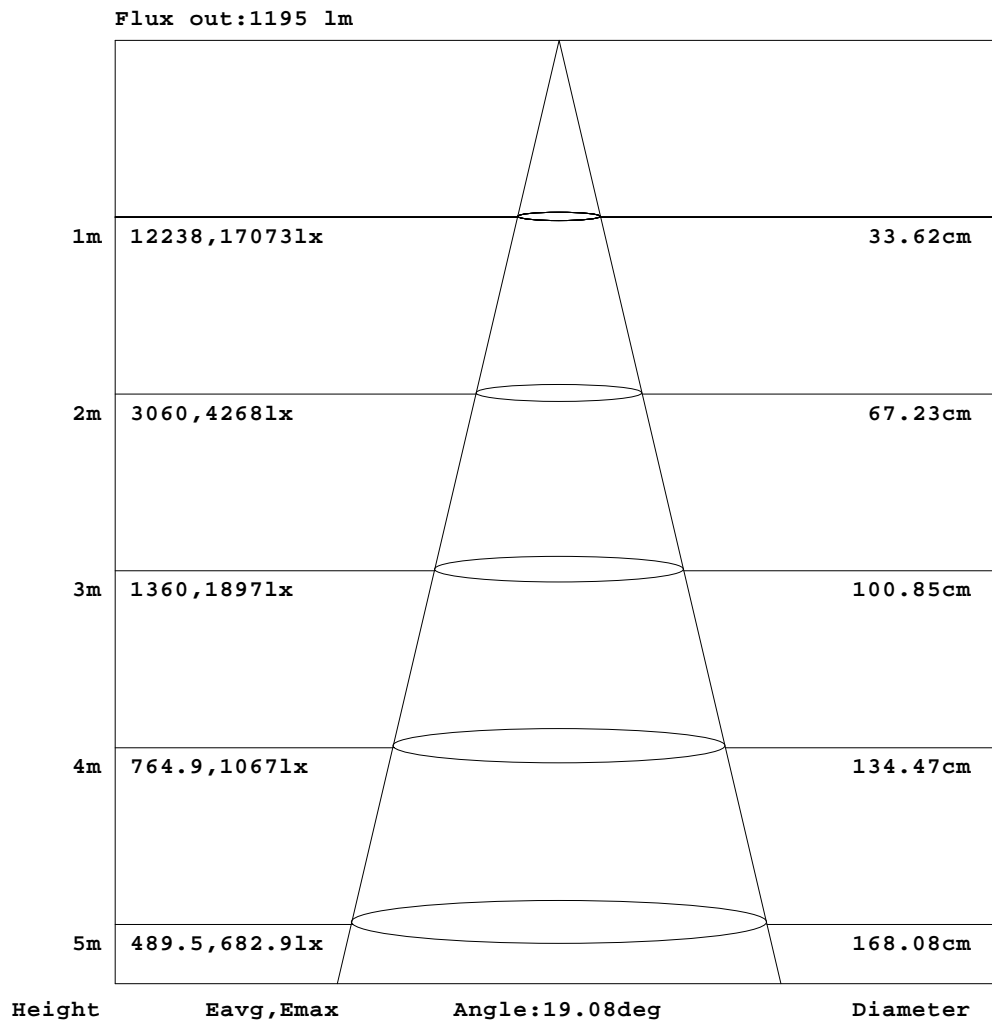


C Range: 0 - 360DEG  
C Interval: 30.0DEG  
Test Speed: HIGH  
Temperature:25.3℃  
Operators:zoe  
Test Date:2023-10-5

Range: 0 - 180DEG  
Interval: 1.0DEG  
Test System:EVERFINE GO-SPEX500\_V1 SYSTEM V2.00.461  
Humidity:65.0%  
Test Distance:3.160m [K=1.0000]  
Remarks: LAMP:BXRE-30G1000-A-83 Ra:90  
LENS:PM-0132-007-056 15R  
DRIVER: ECXe 1050.646 700mA  
30minutes warm-up

## AAI Figure

Test:U:220.03V I:0.1327A P:28.145W PF:0.9609 Freq:49.99Hz Lamp Flux:2523.8x1 lm		
NAME: 2319.200-UA-700	TYPE:	WEIGHT:
SPEC.: 3000K	DIM.:	SERIAL No.: 2310051122
MFR.: RISE	SUR.: 0.002826m2	Shielding Angle:



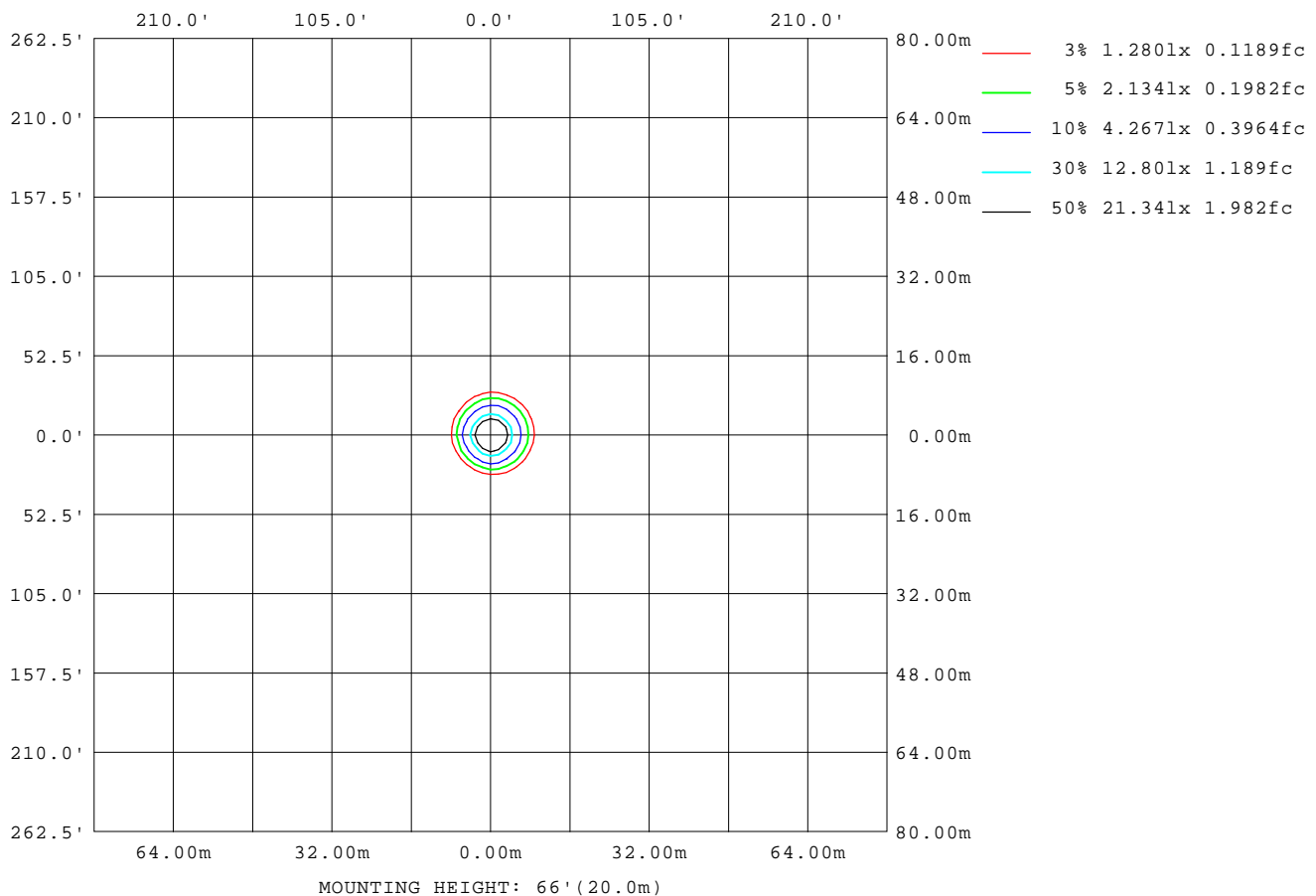
Note:The Curves indicate the illuminated area and the average illumination when the luminaire is at different distance.

C Range: 0 - 360DEG  
C Interval: 30.0DEG  
Test Speed: HIGH  
Temperature:25.3℃  
Operators:zoe  
Test Date:2023-10-5

Range: 0 - 180DEG  
Interval: 1.0DEG  
Test System:EVERFINE GO-SPEX500\_V1 SYSTEM V2.00.461  
Humidity:65.0%  
Test Distance:3.160m [K=1.0000]  
Remarks: LAMP:BXRE-30G1000-A-83 Ra:90  
LENS:PM-0132-007-056 15R  
DRIVER: ECXe 1050.646 700mA  
30minutes warm-up

## ISOLUX DIAGRAM

Test:U:220.03V I:0.1327A P:28.145W PF:0.9609 Freq:49.99Hz Lamp Flux:2523.8x1 lm		
NAME: 2319.200-UA-700	TYPE:	WEIGHT:
SPEC.: 3000K	DIM.:	SERIAL No.: 2310051122
MFR.: RISE	SUR.: 0.002826m2	Shielding Angle:



C Range: 0 - 360DEG  
C Interval: 30.0DEG  
Test Speed: HIGH  
Temperature:25.3℃  
Operators:zoe  
Test Date:2023-10-5

Range: 0 - 180DEG  
Interval: 1.0DEG  
Test System:EVERFINE GO-SPEX500\_V1 SYSTEM V2.00.461  
Humidity:65.0%  
Test Distance:3.160m [K=1.0000]  
Remarks: LAMP:BXRE-30G1000-A-83 Ra:90  
LENS:PM-0132-007-056 15R  
DRIVER: ECXe 1050.646 700mA  
30minutes warm-up

## LED Avg.L Report

Test:U:220.03V I:0.1327A P:28.145W PF:0.9609 Freq:49.99Hz Lamp Flux:2523.8x1 lm		
NAME: 2319.200-UA-700	TYPE:	WEIGHT:
SPEC.: 3000K	DIM.:	SERIAL No.: 2310051122
MFR.: RISE	SUR.: 0.002826m2	Shielding Angle:

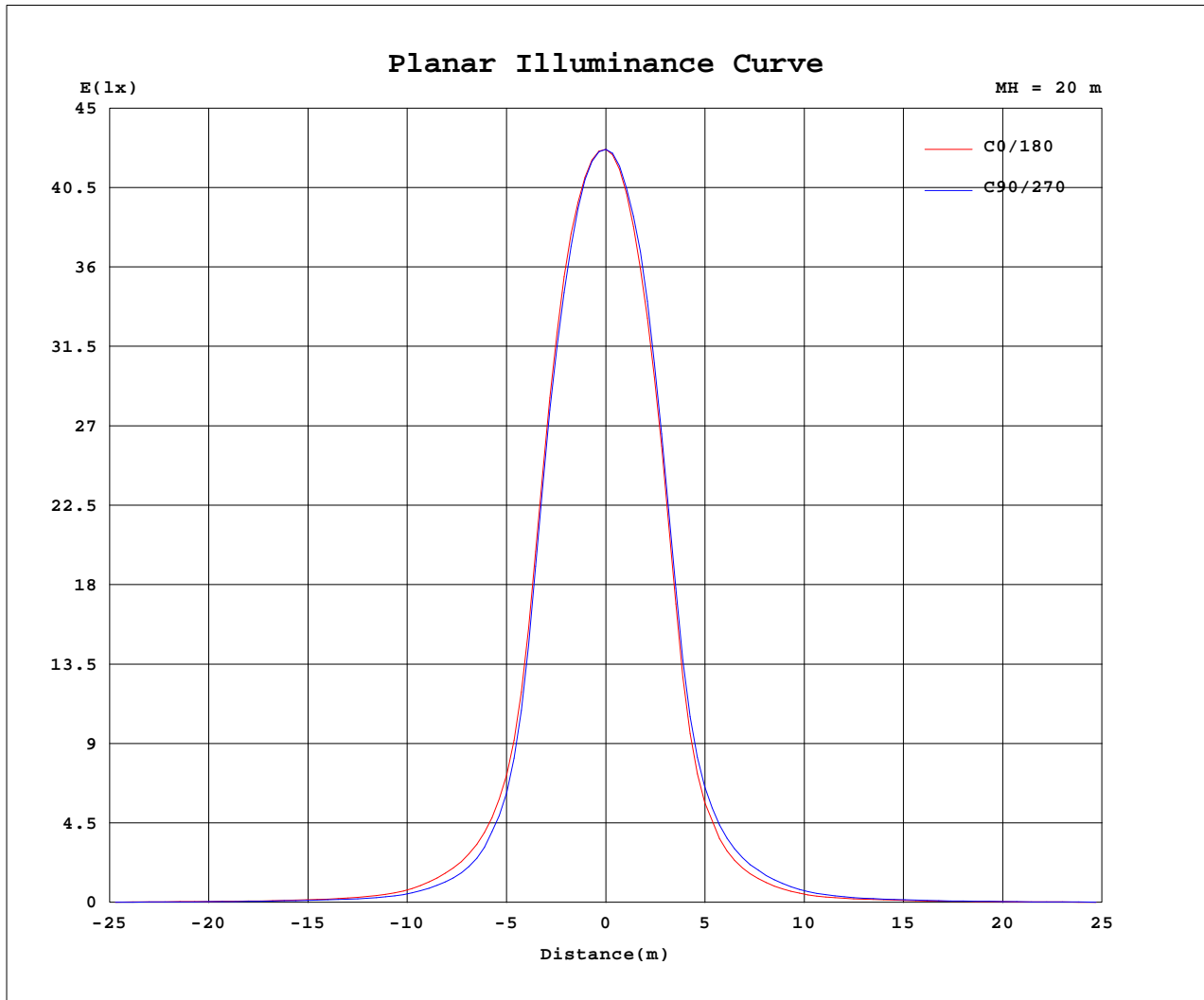
AvgL	cd/m2
L_0~180(65)av	11177
L_0~180(75)av	623
L_0~180(85)av	378
L_90~270(65)av	10789
L_90~270(75)av	579
L_90~270(85)av	328
L_45(65)av	11135
L_45(75)av	639
L_45(85)av	189

Standard: GB/T 29293-2012

C Range: 0 - 360DEG  
C Interval: 30.0DEG  
Test Speed: HIGH  
Temperature:25.3℃  
Operators:zoe  
Test Date:2023-10-5

Range: 0 - 180DEG  
Interval: 1.0DEG  
Test System:EVERFINE GO-SPEX500\_V1 SYSTEM V2.00.461  
Humidity:65.0%  
Test Distance:3.160m [K=1.0000]  
Remarks: LAMP:BXRE-30G1000-A-83 Ra:90  
LENS:PM-0132-007-056 15R  
DRIVER: ECXe 1050.646 700mA  
30minutes warm-up

## Planar Illuminance Curve



C Range: 0 - 360DEG  
 C Interval: 30.0DEG  
 Test Speed: HIGH  
 Temperature: 25.3 °C  
 Operators: zoe  
 Test Date: 2023-10-5

Range: 0 - 180DEG  
 Interval: 1.0DEG  
 Test System: EVERFINE GO-SPEX500\_V1 SYSTEM V2.00.461  
 Humidity: 65.0%  
 Test Distance: 3.160m [K=1.0000]  
 Remarks: LAMP: BXRE-30G1000-A-83 Ra: 90  
 LENS: PM-0132-007-056 15R  
 DRIVER: ECXe 1050.646 700mA  
 30minutes warm-up

## LUMINOUS DISTRIBUTION INTENSITY DATA

Test:U:220.03V I:0.1327A P:28.145W PF:0.9609 Freq:49.99Hz Lamp Flux:2523.8x1 lm		
NAME: 2319.200-UA-700	TYPE:	WEIGHT:
SPEC.: 3000K	DIM.:	SERIAL No.: 2310051122
MFR.: RISE	SUR.: 0.002826m2	Shielding Angle:

Table--1

UNIT: X10cd

C(DEG) (DEG)	0	30	60	90	120	150	180	210	240	270	300	330						
0	1706	1706	1706	1706	1706	1706	1706	1706	1706	1706	1706	1706						
5	1533	1541	1529	1503	1461	1429	1453	1446	1465	1491	1529	1551						
10	833	862	837	798	720	658	708	683	704	745	816	879						
15	260	258	238	219	198	192	206	203	219	238	262	277						
20	112	105	91.0	81.4	70.3	70.0	78.8	84.1	93.2	104	114	118						
25	51.8	47.4	40.6	36.1	31.4	30.9	34.5	36.7	42.2	48.4	52.8	55.9						
30	24.9	22.7	19.3	17.5	16.1	15.9	17.3	18.2	20.9	23.8	25.8	27.0						
35	14.9	13.6	12.5	11.7	11.4	11.2	11.7	11.7	13.0	14.5	15.7	15.9						
40	10.1	9.36	8.78	8.23	7.91	7.70	8.04	8.18	8.88	9.68	10.6	10.6						
45	7.30	6.84	6.44	6.07	5.89	5.88	6.05	6.20	6.56	6.97	7.58	7.70						
50	5.89	5.50	5.24	4.95	4.81	4.85	4.96	5.11	5.39	5.61	6.00	6.16						
55	4.37	4.19	4.00	3.81	3.68	3.71	3.78	3.83	4.00	4.16	4.44	4.60						
60	2.81	2.76	2.63	2.51	2.39	2.41	2.51	2.50	2.61	2.66	2.85	3.00						
65	1.37	1.38	1.37	1.29	1.23	1.29	1.30	1.30	1.34	1.28	1.30	1.43						
70	0.62	0.63	0.62	0.57	0.52	0.53	0.56	0.55	0.58	0.55	0.59	0.67						
75	0.06	0.07	0.06	0.05	0.03	0.03	0.03	0.03	0.03	0.04	0.06	0.08						
80	0.01	0.01	0.01	0.01	0.01	0.01	0.01	0.01	0.01	0.01	0.01	0.01						
85	0.01	0.01	0.01	0.01	0.01	0.01	0.01	0.01	0.01	0.01	0.01	0.01						
90	0.00	0.00	0.00	0.00	0.00	0.00	0.00	0.00	0.00	0.00	0.00	0.00						
95	0.00	0.00	0.00	0.00	0.00	0.00	0.00	0.00	0.00	0.00	0.00	0.00						
100	0.00	0.00	0.00	0.00	0.00	0.00	0.00	0.00	0.00	0.00	0.00	0.00						
105	0.00	0.00	0.00	0.00	0.00	0.00	0.00	0.00	0.00	0.00	0.00	0.00						
110	0.00	0.00	0.00	0.00	0.00	0.00	0.00	0.00	0.00	0.00	0.00	0.00						
115	0.00	0.00	0.00	0.00	0.00	0.00	0.00	0.00	0.00	0.00	0.00	0.00						
120	0.00	0.00	0.00	0.00	0.00	0.00	0.00	0.00	0.00	0.00	0.00	0.00						
125	0.00	0.00	0.00	0.00	0.00	0.00	0.00	0.00	0.00	0.00	0.00	0.00						
130	0.00	0.00	0.00	0.00	0.00	0.00	0.00	0.00	0.00	0.00	0.00	0.00						
135	0.00	0.00	0.00	0.00	0.00	0.00	0.00	0.00	0.00	0.00	0.00	0.00						
140	0.00	0.00	0.00	0.00	0.00	0.00	0.00	0.00	0.00	0.00	0.00	0.00						
145	0.00	0.00	0.00	0.00	0.00	0.00	0.00	0.00	0.00	0.00	0.00	0.00						
150	0.00	0.00	0.00	0.00	0.00	0.00	0.00	0.00	0.00	0.00	0.00	0.00						
155	0.00	0.00	0.00	0.00	0.00	0.00	0.00	0.00	0.00	0.00	0.00	0.00						
160	0.00	0.00	0.00	0.00	0.00	0.00	0.00	0.00	0.00	0.00	0.00	0.00						
165	0.00	0.00	0.00	0.00	0.00	0.00	0.00	0.00	0.00	0.00	0.00	0.00						
170	0.00	0.00	0.00	0.00	0.00	0.00	0.00	0.00	0.00	0.00	0.00	0.00						
175	0.00	0.00	0.00	0.00	0.00	0.00	0.00	0.00	0.00	0.00	0.00	0.00						
180	0.00	0.00	0.00	0.00	0.00	0.00	0.00	0.00	0.00	0.00	0.00	0.00						

C Range: 0 - 360DEG  
C Interval: 30.0DEG  
Test Speed: HIGH  
Temperature:25.3℃  
Operators:zoe  
Test Date:2023-10-5

Range: 0 - 180DEG  
Interval: 1.0DEG  
Test System:EVERFINE GO-SPEX500\_V1 SYSTEM V2.00.461  
Humidity:65.0%  
Test Distance:3.160m [K=1.0000]  
Remarks: LAMP:BXRE-30G1000-A-83 Ra:90  
LENS:PM-0132-007-056 15R  
DRIVER: ECXe 1050.646 700mA  
30minutes warm-up